



# GAT MONTHLY MEMBERSHIP PROGRESS REPORT

Results as of: 5/31/2021

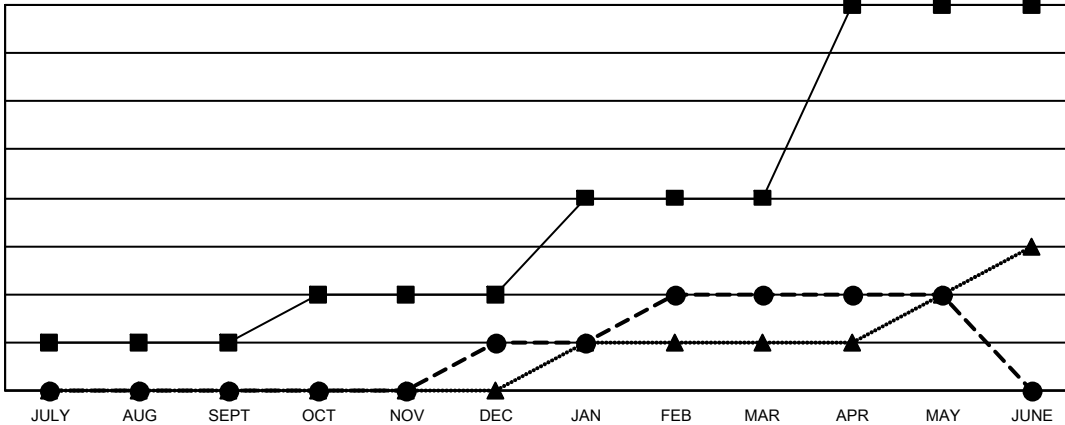
Multiple District 16

LOCATION: NEW JERSEY

Clubs			
RESULTS FOR 2020-2021			
QUARTER	NEW CLUB GOAL	NEW CLUBS	DROPPED CLUBS
JULY/AUG/SEPT	1	0	4
OCT/NOV/DEC	1	1	2
JAN/FEB/MAR	2	1	4
APR/MAY/JUNE	4	0	0

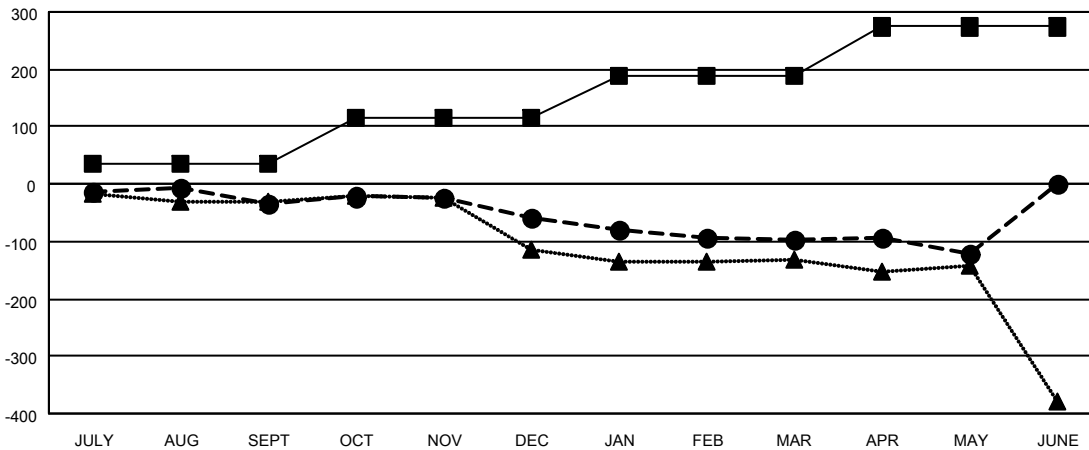
Members			
RESULTS FOR 2020-2021			
QUARTER	MEMBER GROWTH NET GOAL	MEMBER GROWTH ACTUAL	DROPPED MEMBERS ACTUAL (including transfers)
JULY/AUG/SEPT	34	104	106
OCT/NOV/DEC	80	108	117
JAN/FEB/MAR	75	76	95
APR/MAY/JUNE	85	42	58

GOALS AND ACTUAL NEW CLUBS CUMULATIVE



- - CURRENT YEAR GOALS FOR NEW CLUBS
- - CURRENT YEAR ACTUAL NEW CLUBS
- ▲ - LAST YEAR ACTUAL NEW CLUBS

GOALS AND ACTUAL MEMBERS CUMULATIVE



- - MEMBER GROWTH NET GOAL
- - MEMBER GROWTH ACTUAL
- ▲ - LAST YEAR MEMBERSHIP ACTUAL

DROPPED CLUBS: 10	
<u>DROPPED MEMBERS</u>	
DECEASED	61
CLUB CANCELLED	49
OTHER	266
<b>TOTAL</b>	<b>376</b>

56 CLUBS OF 180 ADDED 1 OR MORE NEW MEMBERS

<u>GENDER DISTRIBUTION</u>	
MALE	2,727 (66.03%)
FEMALE	1,403 (33.97%)

[CLICK HERE FOR CUMULATIVE MEMBERSHIP DATA](#)

TOTAL FAMILY UNIT MEMBERS	699
FAMILY MEMBERS PAYING HALF DUES	366